



MX-M6070/M5070/M4070/M3570/M3070

Digital Multifunctional System

www.sharp.eu

SHARP

Be Original.

Advanced features



Enhanced productivity



Easy connectivity



Streamlined efficiency



Optimised solutions

Configurations

Configuration examples

Connectivity and capacity options

Finishing options



Specifications

Next generation features for connected teams.

Wherever you want to take your organisation, moving between print and digital should be as simple as black and white. So, when it comes to your next MFP, choosing one with the most advanced features gives your team everything they need to do their job – even faster and more efficiently.

You could be sending out copies of the latest company news. Or emailing scanned reports to management. Keeping the office ticking over smoothly relies on day-to-day internal processes running like clockwork.

But staying up to speed is just part of what businesses require today. Your workforce also needs to connect when they're out and about. Sharing information and documents via mobile devices or the cloud is vital for getting new business opportunities off the ground. This is where these MFPs come into play – helping to boost your bottom line and energy efficiency to new levels.





Next generation features for connected teams.

Wherever you want to take your organisation, moving between print and digital should be as simple as black and white. So, when it comes to your next MFP, choosing one with the most advanced features gives your team everything they need to do their job – even faster and more efficiently.

Comprehensive tools

With fast output, quality and reliability top of mind, our next generation black and white MFPs feature the latest user-focused controls – putting intuitive functionality at your fingertips.

Click to learn more:

>MX-M6070 >MX-M5070 >MX-M4070
>MX-M3570 >MX-M3070

Performance printing: With five models in the range, print speeds go from 30, up to 60 pages per minute (ppm), on paper sizes up to a maximum of A3W.

Consistent copies: Experience clear, crisp image quality on every copy run with our Auto Process Control and Developer Refresh System.

Flexible finish: From manual and stapleless stapling to saddle-stitching, it's easy to give your documents that professional touch with a wide variety of finishing options to choose from.

Next generation features for connected teams.

Wherever you want to take your organisation, moving between print and digital should be as simple as black and white. So, when it comes to your next MFP, choosing one with the most advanced features gives your team everything they need to do their job – even faster and more efficiently.

Enhanced scanning: The built-in 150-sheet Duplex Single Pass Feeder (DSPF) can process mixed documents simultaneously at speeds of up to 200 impressions per minute. Multiple scanned documents can be converted into separate files with Multicrop. It's also possible to convert scans into editable Microsoft® Office files and searchable PDFs using Optical Character Recognition (OCR).



Enhanced scanning

Energy efficiency meets high quality

Achieve the ultimate balance of speed and quality, while cutting your running costs down to size. As well as its low Typical Electricity Consumption (TEC) value, these MFPs let you set times to switch them on and off. The low-melting point of the toner reduces energy consumption and a quick-heating system keeps warm-up time to a minimum.

Eco Recommendation* is another setting that reminds you to use the MFP in the most environmentally friendly way – and stops any functions you don't need from running at the same time.

*For printing Document Filing data and direct printing (FTP/SMB/USB)

Advanced
features



Enhanced
productivity



Easy
connectivity



Streamlined
efficiency



Optimised solutions

Configurations

Configuration examples

Connectivity and
capacity options

Finishing options



Specifications



Smarter solutions made simple.

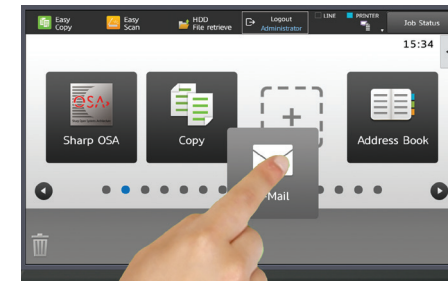
So much more than just a printer. Our MFPs act like the office hub, packed with time-saving technology and functions that free people up to concentrate on what they do best – business.

When an MFP works really well, it's easy to take it for granted. And that's exactly what we intended with our latest black and white devices. Whether it's the fast warm up time, or the simple, intuitive settings on the control panel, we designed every feature to make office life more productive – right from the get-go.

From an IT perspective, you'll find integrating the MFP into your company as seamless and easy as its built-in admin tools.

Designed around you

Imagine an MFP that senses your approach and then wakes up, ready for you to sign in. You can also set the functions on the customisable home screen to the ones you use most. Simply tilt the large, 10.1" colour LCD touchscreen to an easy-to-view angle. And similar to how you use other smart devices – you can zoom in and out, and drag and drop menu items to create helpful shortcuts.



Customise the home screen with the functions you use most.

Then, if there's anything you're not sure about, an embedded 'quick help' menu will guide you in the right direction. It's also possible to get online from the MFP, thanks to the integrated web browsing function.

Advanced
features



Enhanced
productivity



Easy
connectivity



Streamlined
efficiency



Optimised solutions

Configurations

Configuration examples

Connectivity and
capacity options

Finishing options



Specifications



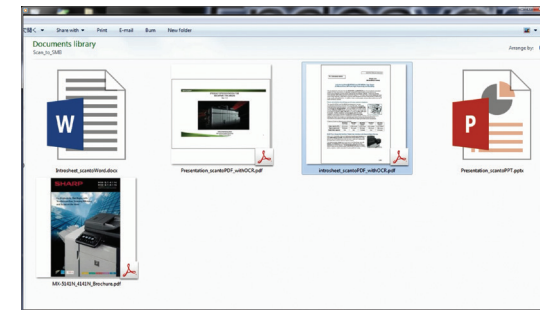
Smarter solutions made simple.

So much more than just a printer. Our MFPs act like the office hub, packed with time-saving technology and functions that free people up to concentrate on what they do best – business.

Intuitively helpful at every step

Your printing task might be large, complex and time-consuming, but checking and completing it with our MFPs won't be. Along with features such as Easy Mode and a consistent User Interface, the Advanced Preview function lets you check and edit scanned documents on the MFP itself. Saving you the bother of having to make any last minute changes on your computer before you print.

Scanning is enhanced too with Auto Colour Mode adjusting the colours in the original image to accurate greyscale shades. And rather than having to retype documents you only have as hard copy, you can use the OCR to scan them in various formats, including fully searchable PDFs and editable Microsoft® Office files (Word, PowerPoint and Excel). PCL6 emulation and Genuine Adobe® PostScript® 3™ come as standard.



Digitise and store essential information using OCR.

Advanced
features



Enhanced
productivity



**Easy
connectivity**



Streamlined
efficiency



Optimised solutions

Configurations

Configuration examples

Connectivity and
capacity options

Finishing options



Specifications

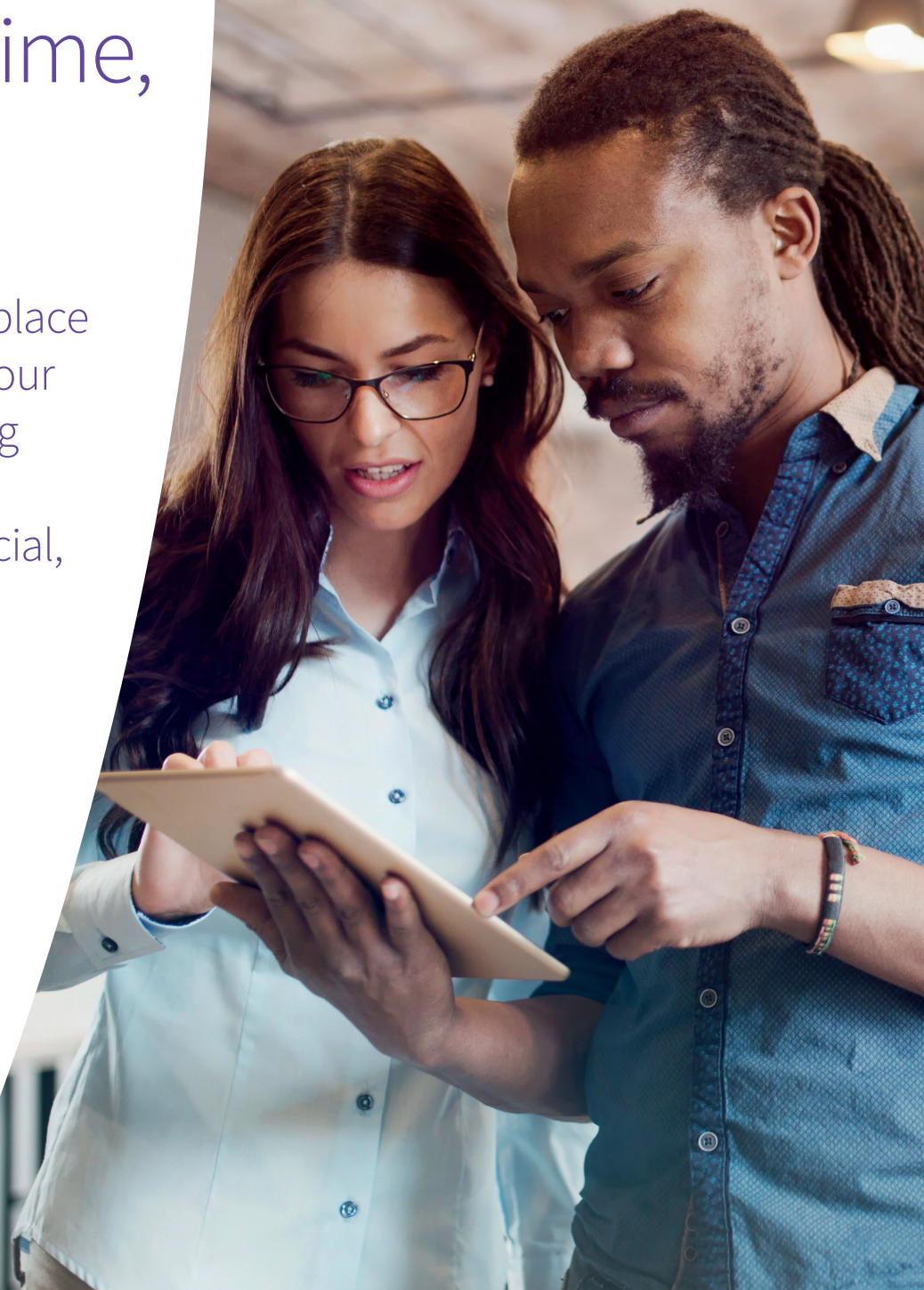
Connect anytime, anywhere.

Business isn't fixed to one place anymore – and neither is your workforce. That's why being able to connect and share information securely is crucial, right across the board.

Access all digital areas

Whether your team is based in the office, or working on- and off-site using phones and tablets, it's easier than ever to keep up to date and in touch. Whatever devices you use in your business, these MFPs offer flexible ways to print, copy, scan and share information stored on your network or in the cloud.

Wherever you are, security is never an issue either. The Print Release function lets you print from any networked MFP in the range at a time that suits you – removing the risk of leaving confidential documents unattended.



Advanced
features



Enhanced
productivity



**Easy
connectivity**



Streamlined
efficiency



Optimised solutions

Configurations

Configuration examples

Connectivity and
capacity options

Finishing options



Specifications



Connect anytime, anywhere.

Business isn't fixed to one place anymore – and neither is your workforce. That's why being able to connect and share information securely is crucial, right across the board.

Choose how you connect

The cloud

Print from and scan to the cloud straight from the MFP control panel, without having to constantly enter usernames and passwords. Access popular public cloud storage services in an instant with Single Sign-on, including Google Drive™, Sharepoint®, OneDrive®, Microsoft Online, Box and Cloud Portal Office.



Mobile

When you're on the move, print from and scan to mobiles and tablets over your wireless LAN network with Sharpdesk Mobile. This works from any app that supports Google Cloud Print™* or the Android™ printing framework (Sharp Print Service Plugin).

If you're close enough, it's also possible to connect with the MFP via Near Field Communication (NFC). Or use your phone to scan the QR Code® on the MFP. Either way, the configuration is already in place.

*Availability varies by country/region.

Advanced
features



Enhanced
productivity



**Easy
connectivity**



Streamlined
efficiency



Optimised solutions

Configurations

Configuration examples

Connectivity and
capacity options

Finishing options



Specifications



Connect anytime, anywhere.

Business isn't fixed to one place anymore – and neither is your workforce. That's why being able to connect and share information securely is crucial, right across the board.

Email

Access your Gmail™ or Microsoft Exchange accounts and send scanned data directly from the MFP to key contacts in your address book.

USB

Simply choose your saved Microsoft® Office files and print them from a USB stick plugged straight into the MFP.



Plug in and print from your USB memory stick.

Safe, flexible and secure

Sharing more information digitally does, of course, raise issues around security. But with these MFPs you don't have to make any compromises in order to protect your data. Controlling access is made easier with high security logins and user authentication. While any email communications are kept secure with S/MIME.

For maximum security, as required by government, military and legal organisations, your IT administrator can permanently enable*¹ the highest level of security. This conforms to the Hard Copy Device Protection Profile (HCDPP*²) standard.

*¹ Once enabled, some functions may not be available.

*² HCD PP ver1.0 – non Common Criteria

Advanced
features



Enhanced
productivity



Easy
connectivity



**Streamlined
efficiency**



Optimised solutions

Configurations

Configuration examples

Connectivity and
capacity options

Finishing options



Specifications



Discover new ways to streamline your business for the better.

From hard-copy security to easy cloud access, there are lots of new ways to run your business more efficiently.

When you're busy staying on top of business operations, you don't have the time (or money) to waste on office niggles such as misplaced hard-copy documents, or unauthorised users gaining access to valuable resources.

That's where this range of MFPs can help put you in complete control of your organisation's information infrastructure. Not only by transforming everyday printing, copying and scanning tasks. But, when paired with Cloud Portal Office and one or more of our Optimised Software Solutions – you can reach new heights of efficiency and productivity across every business area.

Advanced
features



Enhanced
productivity



Easy
connectivity



**Streamlined
efficiency**



Optimised solutions

Configurations

Configuration examples

Connectivity and
capacity options

Finishing options



Specifications



Discover new ways to streamline your business for the better.

From hard-copy security to easy cloud access, there are lots of new ways to run your business more efficiently.

Any time, any place: work together with Cloud Portal Office

Whether your employees are out and about at meetings, or preparing presentations back at the office, Cloud Portal Office helps keep everyone in the loop.

By storing all the information in a single, clearly indexed place, staff will find it easy to access what they need – from any phone, laptop or tablet – and even the Sharp BIG PAD interactive display.



Scan, index and save documents straight to Cloud Portal Office, then alert colleagues that you've added documents, directly from the MFP. With this cloud-based document management system, there won't be any time wasting going through multiple databases and storage systems, or having to look for misplaced documents. Instead, you can look forward to greater efficiencies right across your business.

[Click here to learn more about Cloud Portal Office](#)

Advanced
features



Enhanced
productivity



Easy
connectivity



Streamlined
efficiency



Optimised solutions

Configurations

Configuration examples

Connectivity and
capacity options

Finishing options



Specifications



Discover new ways to streamline your business for the better.

From hard-copy security to easy cloud access, there are lots of new ways to run your business more efficiently.

Optimised Software Solutions

Our comprehensive range of solutions are designed to bring down costs in key areas, increase efficiency and strengthen security.

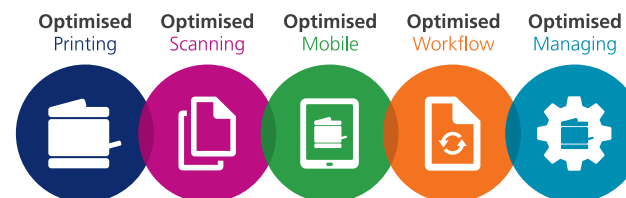
Optimised Printing Solutions help you monitor and manage your print and copy usage. Eliminate unauthorised use, track and recover costs while reducing waste.

Optimised Scanning Solutions save time and avoid costly errors by simplifying and automating how you store and share documents – whatever their format.

Optimised Mobile Solutions create a more flexible team by helping people connect tablets, phones and laptops simply and securely, so they're always in touch.

Optimised Workflow Solutions help restore the productivity you need to achieve and maintain profitable growth by streamlining and simplifying repetitive tasks.

Optimised Managing Solutions ease the burden of managing your MFPs and reduce the cost of ownership.



[Click here to learn more about our Optimised Software Solutions](#)

Advanced features ● ● ●

Enhanced productivity ● ●

Easy connectivity ● ● ●

Streamlined efficiency ● ●

Optimised solutions

Configurations

Configuration examples

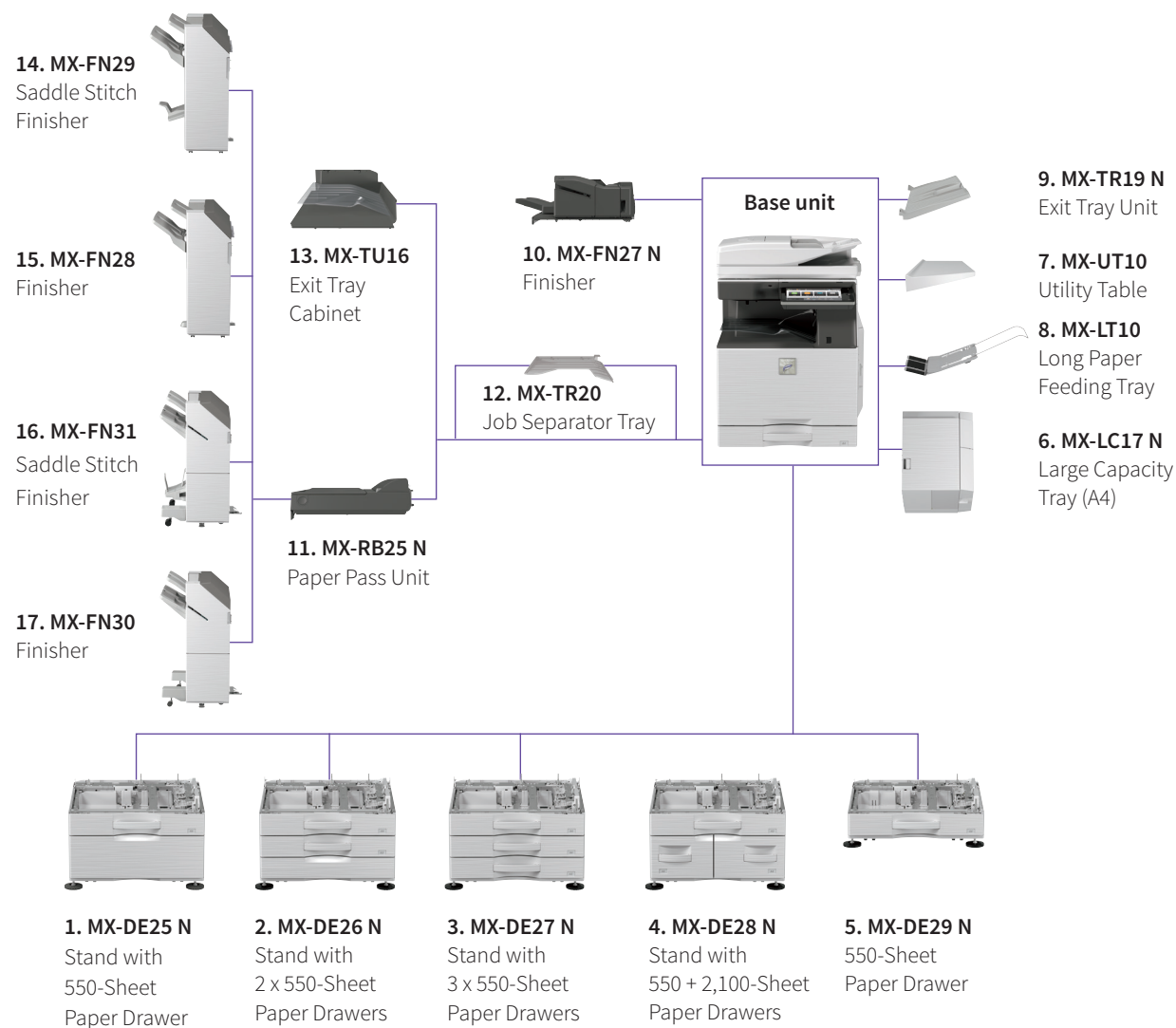
Connectivity and capacity options

Finishing options ● ●

Specifications



Configurations



[Click here to view Configuration examples](#)

[Click the options to learn more](#)

Advanced
features



Enhanced
productivity



Easy
connectivity



Streamlined
efficiency



Optimised solutions

Configurations

Configuration examples

Connectivity and
capacity options

Finishing options



Specifications



Configuration examples



MX-M6070 Base Unit

Job Separator Tray
550-Sheet Paper Drawer



MX-M6070 Base Unit

Inner Finisher
Stand with 550 + 2,100-Sheet Paper Drawers
Exit Tray Unit



MX-M6070 Base Unit

Finisher
Paper Pass Unit
Stand with 3 x 550-Sheet Paper Drawers
Exit Tray Unit
Large Capacity Tray

Advanced
features



Enhanced
productivity



Easy
connectivity



Streamlined
efficiency



Optimised solutions

Configurations

Configuration examples

Connectivity and
capacity options

Finishing options



Specifications

Options

Printing

MX-PF10 Barcode Font Kit

Enables barcode printing

Faxing

MX-FX15 Fax Expansion Kit

MX-FWX1 Internet Fax Expansion Kit

Scanning

AR-SU1 Stamp Unit

Marks already scanned documents for checking

Sharpdesk Licenses

MX-USX1/X5

1/5-License Kit

MX-US10/50/A0

10/50/100-License Kit

Sharp OSA®

MX-AMX1 Application Integration Module

Security

MX-FR57U*2 Data Security Kit

Commercial Version

Base unit

1. MX-DE25 N Stand with 550-Sheet Paper Drawer

550 sheets*1, A3W to A5R (60 - 300 g/m²)

2. MX-DE26 N Stand with 2 x 550-Sheet Paper Drawer

550 sheets*1 each for lower and upper trays, A3W to A5R (60 - 300 g/m²)

3. MX-DE27 N Stand with 3 x 550-Sheet Paper Drawer

550 sheets*1 each for lower and upper trays, A3W to A5R (60 - 300 g/m²)

4. MX-DE28 N Stand with 550 + 2,100-Sheet Paper Drawer

Upper tray: A3W - A5R, 550 sheets*1 (80 g/m²)

Lower tray (Left): A4, 1,200 sheets*1 (60 - 105 g/m²)

Lower tray (Right): A4 - B5, 900 sheets*1 (60 - 105 g/m²)

5. MX-DE29 N 550-Sheet Paper Drawer

550 sheets*1, A3W to A5R (60 - 300 g/m²)

6. MX-LC17 N Large Capacity Tray (A4)

3,000 sheets*1, A4 - B5 (60 - 220 g/m²)

7. MX-UT10 Utility Table

*1 Number of sheets based on 80 g/m².

*2 Available at a later date.



Advanced
features



Enhanced
productivity



Easy
connectivity



Streamlined
efficiency



Optimised solutions

Configurations

Configuration examples

Connectivity and
capacity options

Finishing options ● ●

Specifications

Options

Finishing

8. MX-LT10 Long Paper Feeding Tray

Recommended for banner printing

9. MX-TR19 N Exit Tray Unit

10. MX-FN27 N Inner Finisher

A3 - B5 (offset/staple), A3W - A5R (non offset)

Offset tray (upper): max. 500-sheet paper capacity*¹

Stapling capacity: max. 50-sheet multi-position staple*¹

Staple position: 3 locations (front, rear or 2 point stitching)

Manual Stapling: 1-point at rear (Flat), 45 sheets (64 g/m²), 40 sheets (80 g/m²)

Stapleless capacity: max. 5-sheet (64 g/m²), 4 sheet (65 - 81.4 g/m²),

3 sheet (81.5 - 105 g/m²)

Stapleless position: 1-point at rear (Slant), A3 - B5

Optional Punch Module for MX-FN27 N:

MX-PN14C - 2/4 Hole Punch Module

MX-PN14D - 4 Hole Wide Punch Module

11. MX-RB25 N Paper Pass Unit

Required when using MX-FN28, MX-FN29, MX-FN30 & MX-FN31

12. MX-TR20 Job Separator Tray

Requires MX-TU16 Exit Tray Cabinet

13. MX-TU16 Exit Tray Cabinet

14. MX-FN29 1k Saddle Stitch Finisher

A3W - A5R (offset/staple), A3W - A5R (non offset)

Offset tray (upper): max. 1,000-sheet paper capacity*¹

Stapling capacity: max. 50-sheet multi-position staple*¹

Staple position: 1-point at front (Flat), 1-point at back (Flat), 2 point stitching

Saddle stitch tray (lower): 7 sets (11-15 sheets), 10 sets (6-10 sheets),

20 sets (1-5 sheets). 15 sheets max per set

*¹ Number of sheets based on 80 g/m².



Advanced
features



Enhanced
productivity



Easy
connectivity



Streamlined
efficiency



Optimised solutions

Configurations

Configuration examples

Connectivity and
capacity options

Finishing options



Specifications

Options



15. MX-FN28 1k Finisher

A3W - A5R (offset/staple), A3W - A5R (non offset)

Offset tray (upper): max.1,000-sheet paper capacity*¹

Stapling capacity: max. 50-sheet multi-position staple*¹

Staple position: 1-point at front (Flat), 1-point at back (Flat), 2 point stitching

Optional Punch Module for MX-FN29 & MX-FN28:

MX-PN15C - 2/4 Hole Punch Module

MX-PN15D - 4 Hole Wide Punch Module

16. MX-FN31 3k Saddle Stitch Finisher

A3 - B5 (offset/staple), A3W - A5R (non offset)

Offset tray (upper): max.3,000-sheet paper capacity*¹

Stapling capacity: max. 65-sheet multi-position staple*¹

Staple position: 1-point at front (Slant), 1-point at back (Slant), 2 point stitching

Manual Stapling: 1-point at rear (Flat), 45 sheets (64 g/m²), 40 sheets (80 g/m²)

Stapleless capacity: max.5-sheet (64 g/m²), 4 sheet (65 – 81.4 g/m²),

3 sheet (81.5 - 105 g/m²)

Stapleless position: 1-point at rear (Slant), A3 - B5

Saddle stitch tray (lower): 10 sets (11-15 sheets), 15 sets (6-10 sheets),

25 sets (1-5 sheets), 20 sheets max per set

17. MX-FN30 3k Finisher

A3 - B5 (offset/staple), A3W - A5R (non offset)

Offset tray (upper): max.3,000-sheet paper capacity*¹

Stapling capacity: max. 65-sheet multi-position staple*¹

Staple position: 1-point at front (Slant), 1-point at back (Slant), 2 point stitching

Manual Stapling: 1-point at rear (Flat), 45 sheets (64 g/m²), 40 sheets (80 g/m²)

Stapleless capacity: max.5-sheet (64 g/m²), 4 sheet (65 – 81.4 g/m²),

3 sheet (81.5 - 105 g/m²)

Stapleless position: 1-point at rear (Slant), A3 - B5

Optional Punch Module for MX-FN31 & MX-FN30:

MX-PN16C - 2/4 Hole Punch Module

MX-PN16D - 4 Hole Wide Punch Module

*¹ Number of sheets based on 80 g/m².

Advanced
features



Enhanced
productivity



Easy
connectivity



Streamlined
efficiency



Optimised solutions

Configurations

Configuration examples

Connectivity and
capacity options

Finishing options



Specifications



Specifications

General
Copier
Wireless LAN
Network Scanner
Document Filing
Network Printer
Fax (optional MX-FX15 required)
External Dimensions



Click the specification buttons for further information



^{*1} Long-edge feeding. ^{**} Only short-edge feeding can be used with A5 paper. ^{**1} At rated voltage, 23°C (73.4°F). May vary depending on operating conditions and environment. ^{**2} HDD capacity depends on procurement and sourcing status. ^{**3} Long-edge feeding of A4 sheets from 1st paper tray, using document glass, without Auto Colour Selection and Auto Colour mode, MFP in fully ready condition. May vary depending on operating conditions and environment. ^{**4} Not applicable to Software AP mode. ^{**5} Based on Sharp's A4 standard chart, using document feeder and long-edge feeding. Using factory default settings with Auto Colour Selection off. Scan speed will vary depending on the type of document and the scan settings. ^{**6} Colour/greyscale only. ^{**7} Storage capacity will vary depending on the type of document and the scan settings. ^{**8} Some features require option(s). ^{**9} Based on Sharp's standard chart with approx. 700 characters (A4 long-edge feeding) at standard resolution in Super G3 mode, 33,600 bps, JBIG compression.

Design and specifications are subject to change without prior notice. All information was correct at time of print. The ENERGY STAR logo is a certification mark and may only be used to certify specific products that have been determined to meet the ENERGY STAR programme requirements. ENERGY STAR is a US registered mark. Windows, Windows NT, Windows XP and Windows Vista are registered trademarks of Microsoft Corporation. Adobe and PostScript 3 are either registered trademarks or trademarks of Adobe Systems Incorporated in the U.S. and/or other countries. All other company names, product names and logotypes are trademarks or registered trademarks of their respective owners. ©Sharp Corporation February 2018. Ref: MX-M6070/MX-M5070/MX-M4070/MX-M3570/MX-M3070 Brochure (Job 18929). All trademarks acknowledged. E&O

Advanced
features



Enhanced
productivity



Easy
connectivity



Streamlined
efficiency



Optimised solutions

Configurations

Configuration examples

Connectivity and
capacity options

Finishing options



Specifications



Specifications

General
Copier
Wireless LAN
Network Scanner
Document Filing
Network Printer
Fax (optional MX-FX15 required)
External Dimensions

Click the specification buttons for further information

Engine speed (ppm/cpm) (Max)	A4^{*1}	A3	A3W
MX-M6070	60	28	26
MX-M5070	50	24	23
MX-M4070	40	19	18
MX-M3570	35	17	16
MX-M3070	30	15	14
Control panel display	10.1-inch colour LCD touchscreen		
Paper size (Min – Max)	A5 ^{*2} – A3W		
Paper weight (g/m ²)			
Tray	60 - 300		
Multi-bypass	55 - 300		
Paper capacity (Std – Max)			
Sheets	650 - 6,300		
Drawers	1 - 4 (plus bypass tray)		
Warm-up time^{*3} (seconds)			
MX-M6070	18		
MX-M5070	16		
MX-M4070/MX-M3570/MX-M3070	14		
Memory (GB)			
Copier/Printer (shared)	5		
HDD ^{*4}	500		
Power requirements	Rated local AC voltage $\pm 10\%$, 50/60 Hz		
Power consumption (kW) (Max)	1.84 (220 to 240V)		
Dimensions (mm) (W x D x H)	616 x 660 x 838		
Weight (kg)	72		



^{*1} Long-edge feeding. ^{*2} Only short-edge feeding can be used with A5 paper. ^{*3} At rated voltage, 23°C (73.4°F). May vary depending on operating conditions and environment. ^{*4} HDD capacity depends on procurement and sourcing status. ^{*5} Long-edge feeding of A4 sheets from 1st paper tray, using document glass, without Auto Colour Selection and Auto Colour mode, MFP in fully ready condition. May vary depending on operating conditions and environment. ^{*6} Not applicable to Software AP mode. ^{*7} Based on Sharp's A4 standard chart, using document feeder and long-edge feeding. Using factory default settings with Auto Colour Selection off. Scan speed will vary depending on the type of document and the scan settings. ^{*8} Colour/greyscale only. ^{**} Storage capacity will vary depending on the type of document and the scan settings. ^{**10} Some features require option(s). ^{**11} Based on Sharp's standard chart with approx. 700 characters (A4 long-edge feeding) at standard resolution in Super G3 mode, 33,600 bps, JBIG compression.

Design and specifications are subject to change without prior notice. All information was correct at time of print. The ENERGY STAR logo is a certification mark and may only be used to certify specific products that have been determined to meet the ENERGY STAR programme requirements. ENERGY STAR is a US registered mark. Windows, Windows NT, Windows XP and Windows Vista are registered trademarks of Microsoft Corporation. Adobe and PostScript 3 are either registered trademarks or trademarks of Adobe Systems Incorporated in the U.S. and/or other countries. All other company names, product names and logotypes are trademarks or registered trademarks of their respective owners. ©Sharp Corporation February 2018. Ref: MX-M6070/MX-M5070/MX-M4070/MX-M3570/MX-M3070 Brochure (Job 18929). All trademarks acknowledged. E&O

Advanced
features



Enhanced
productivity



Easy
connectivity



Streamlined
efficiency



Optimised solutions

Configurations

Configuration examples

Connectivity and
capacity options

Finishing options



Specifications



Specifications

General
Copier
Wireless LAN
Network Scanner
Document Filing
Network Printer
Fax (optional MX-FX15 required)
External Dimensions

Click the specification buttons for further information

Original paper size (Max)	A3
First copy time ^{*5}	
MX-M6070	3.5
MX-M5070	3.7
MX-M4070/MX-M3570/MX-M3070	4.5
Continuous copies (Max)	9,999
Print resolution (dpi)	
Scan	600 x 600, 600 x 400, 600 x 300
Print	1,200 x 1,200, 600 x 600, 9,600 (equivalent) x 600 (depending on copy mode)
Gradation levels	256
Zoom range (%)	25 – 400, (25 – 200 using DSPF) in 1% increments
Preset copy ratios (Metric)	10 ratios (5R/5E)



^{*1} Long-edge feeding. ^{*2} Only short-edge feeding can be used with A5 paper. ^{*3} At rated voltage, 23°C (73.4°F). May vary depending on operating conditions and environment. ^{*4} HDD capacity depends on procurement and sourcing status. ^{*5} Long-edge feeding of A4 sheets from 1st paper tray, using document glass, without Auto Colour Selection and Auto Colour mode, MFP in fully ready condition. May vary depending on operating conditions and environment. ^{**} Not applicable to Software AP mode. ^{**} Based on Sharp's A4 standard chart, using document feeder and long-edge feeding. Using factory default settings with Auto Colour Selection off. Scan speed will vary depending on the type of document and the scan settings. ^{**} Colour/greyscale only. ^{**} Storage capacity will vary depending on the type of document and the scan settings. ^{**} Some features require option(s). ^{**1} Based on Sharp's standard chart with approx. 700 characters (A4 long-edge feeding) at standard resolution in Super G3 mode, 33,600 bps, JBIG compression.

Design and specifications are subject to change without prior notice. All information was correct at time of print. The ENERGY STAR logo is a certification mark and may only be used to certify specific products that have been determined to meet the ENERGY STAR programme requirements. ENERGY STAR is a US registered mark. Windows, Windows NT, Windows XP and Windows Vista are registered trademarks of Microsoft Corporation. Adobe and PostScript 3 are either registered trademarks or trademarks of Adobe Systems Incorporated in the U.S. and/or other countries. All other company names, product names and logotypes are trademarks or registered trademarks of their respective owners. ©Sharp Corporation February 2018. Ref: MX-M6070/MX-M5070/MX-M4070/MX-M3570/MX-M3070 Brochure (Job 18929). All trademarks acknowledged. E&O

Advanced
features



Enhanced
productivity



Easy
connectivity



Streamlined
efficiency



Optimised solutions

Configurations

Configuration examples

Connectivity and
capacity options

Finishing options



Specifications



Specifications

General
Copier
Wireless LAN
Network Scanner
Document Filing
Network Printer
Fax (optional MX-FX15 required)
External Dimensions

Click the specification buttons for further information

Compliant regulation	IEEE802.11n/g/b
Access mode	Infrastructure mode, Software AP mode
Security	WEP, WPA/WPA2-mixed PSK, WPA/WPA2-mixed EAP* ⁶ , WPA2 PSK, WPA2 EAP* ⁶



*¹ Long-edge feeding. *² Only short-edge feeding can be used with A5 paper. *³ At rated voltage, 23°C (73.4°F). May vary depending on operating conditions and environment. *⁴ HDD capacity depends on procurement and sourcing status. *⁵ Long-edge feeding of A4 sheets from 1st paper tray, using document glass, without Auto Colour Selection and Auto Colour mode, MFP in fully ready condition. May vary depending on operating conditions and environment. *⁶ Not applicable to Software AP mode. *⁷ Based on Sharp's A4 standard chart, using document feeder and long-edge feeding. Using factory default settings with Auto Colour Selection off. Scan speed will vary depending on the type of document and the scan settings. *⁸ Colour/greyscale only. *⁹ Storage capacity will vary depending on the type of document and the scan settings. *¹⁰ Some features require option(s). *¹¹ Based on Sharp's standard chart with approx. 700 characters (A4 long-edge feeding) at standard resolution in Super G3 mode, 33,600 bps, JBIG compression.

Design and specifications are subject to change without prior notice. All information was correct at time of print. The ENERGY STAR logo is a certification mark and may only be used to certify specific products that have been determined to meet the ENERGY STAR programme requirements. ENERGY STAR is a US registered mark. Windows, Windows NT, Windows XP and Windows Vista are registered trademarks of Microsoft Corporation. Adobe and PostScript 3 are either registered trademarks or trademarks of Adobe Systems Incorporated in the U.S. and/or other countries. All other company names, product names and logotypes are trademarks or registered trademarks of their respective owners. ©Sharp Corporation February 2018. Ref: MX-M6070/MX-M5070/MX-M4070/MX-M3570/MX-M3070 Brochure (Job 18929). All trademarks acknowledged. E&O

Advanced
features



Enhanced
productivity



Easy
connectivity



Streamlined
efficiency



Optimised solutions

Configurations

Configuration examples

Connectivity and
capacity options

Finishing options



Specifications



Specifications

General
Copier
Wireless LAN
Network Scanner
Document Filing
Network Printer
Fax (optional MX-FX15 required)
External Dimensions

Click the specification buttons for further information

Scan method	Push scan (via control panel) Pull scan (TWAIN-compliant application)	
Scan speed ^{*7} (ipm) (Max)	One-sided 100	Two-sided 200
Resolution (dpi) (Max)	Push scan Pull scan	
	100, 150, 200, 300, 400, 600 75, 100, 150, 200, 300, 400, 600 50 to 9,600 dpi via user setting	
File formats	TIFF, PDF, PDF/A, encrypted PDF, compact PDF ^{*8} , JPEG ^{*8} , XPS, searchable PDF, Microsoft® Office (pptx, xlsx, docx), text (TXT), rich text (RTF)	
Scan destinations	Scan to e-mail, desktop, FTP server, network folder (SMB), USB memory, HDD	
Scanner utilities	Sharpdesk	



^{*1} Long-edge feeding. ^{*2} Only short-edge feeding can be used with A5 paper. ^{*3} At rated voltage, 23°C (73.4°F). May vary depending on operating conditions and environment. ^{*4} HDD capacity depends on procurement and sourcing status. ^{*5} Long-edge feeding of A4 sheets from 1st paper tray, using document glass, without Auto Colour Selection and Auto Colour mode, MFP in fully ready condition. May vary depending on operating conditions and environment. ^{*6} Not applicable to Software AP mode. ^{*7} Based on Sharp's A4 standard chart, using document feeder and long-edge feeding. Using factory default settings with Auto Colour Selection off. Scan speed will vary depending on the type of document and the scan settings. ^{*8} Colour/greyscale only. ^{*9} Storage capacity will vary depending on the type of document and the scan settings. ^{*10} Some features require option(s). ^{*11} Based on Sharp's standard chart with approx. 700 characters (A4 long-edge feeding) at standard resolution in Super G3 mode, 33,600 bps, JBIG compression.

Design and specifications are subject to change without prior notice. All information was correct at time of print. The ENERGY STAR logo is a certification mark and may only be used to certify specific products that have been determined to meet the ENERGY STAR programme requirements. ENERGY STAR is a US registered mark. Windows, Windows NT, Windows XP and Windows Vista are registered trademarks of Microsoft Corporation. Adobe and PostScript 3 are either registered trademarks or trademarks of Adobe Systems Incorporated in the U.S. and/or other countries. All other company names, product names and logotypes are trademarks or registered trademarks of their respective owners. ©Sharp Corporation February 2018. Ref: MX-M6070/MX-M5070/MX-M4070/MX-M3570/MX-M3070 Brochure (Job 18929). All trademarks acknowledged. E&O

Advanced
features



Enhanced
productivity



Easy
connectivity



Streamlined
efficiency



Optimised solutions

Configurations

Configuration examples

Connectivity and
capacity options

Finishing options



Specifications



Specifications

General
Copier
Wireless LAN
Network Scanner
Document Filing
Network Printer
Fax (optional MX-FX15 required)
External Dimensions

Click the specification buttons for further information

Document filing capacity ^{*9}	Pages	Files
Main & custom folders	20,000	3,000
Quick file folder	10,000	1,000
Stored jobs^{*10}	Copy, print, scan, fax transmission	
Storage folders	Quick file folder, main folder, custom folder (max. 1,000)	
Confidential storage	Password protection (for main & custom folders)	



^{*1} Long-edge feeding. ^{*2} Only short-edge feeding can be used with A5 paper. ^{*3} At rated voltage, 23°C (73.4°F). May vary depending on operating conditions and environment. ^{*4} HDD capacity depends on procurement and sourcing status. ^{*5} Long-edge feeding of A4 sheets from 1st paper tray, using document glass, without Auto Colour Selection and Auto Colour mode, MFP in fully ready condition. May vary depending on operating conditions and environment. ^{*6} Not applicable to Software AP mode. ^{*7} Based on Sharp's A4 standard chart, using document feeder and long-edge feeding. Using factory default settings with Auto Colour Selection off. Scan speed will vary depending on the type of document and the scan settings. ^{*8} Colour/greyscale only. ^{*9} Storage capacity will vary depending on the type of document and the scan settings. ^{*10} Some features require option(s). ^{*11} Based on Sharp's standard chart with approx. 700 characters (A4 long-edge feeding) at standard resolution in Super G3 mode, 33,600 bps, JBIG compression.

Design and specifications are subject to change without prior notice. All information was correct at time of print. The ENERGY STAR logo is a certification mark and may only be used to certify specific products that have been determined to meet the ENERGY STAR programme requirements. ENERGY STAR is a US registered mark. Windows, Windows NT, Windows XP and Windows Vista are registered trademarks of Microsoft Corporation. Adobe and PostScript 3 are either registered trademarks or trademarks of Adobe Systems Incorporated in the U.S. and/or other countries. All other company names, product names and logotypes are trademarks or registered trademarks of their respective owners. ©Sharp Corporation February 2018. Ref: MX-M6070/MX-M5070/MX-M4070/MX-M3570/MX-M3070 Brochure (Job 18929). All trademarks acknowledged. E&O

Advanced
features



Enhanced
productivity



Easy
connectivity



Streamlined
efficiency



Optimised solutions

Configurations

Configuration examples

Connectivity and
capacity options

Finishing options



Specifications



Specifications

General
Copier
Wireless LAN
Network Scanner
Document Filing
Network Printer
Fax (optional MX-FX15 required)
External Dimensions

Click the specification buttons for further information

Resolution (dpi)	1,200 x 1,200, 600 x 600, 9,600 (equivalent) x 600
Interface	USB 2.0, 10Base-T/100Base-TX /1000Base-T
Supported OS	Windows Server® 2008, 2008R2, 2012, 2012R2, 2016, Windows® 7, 8.1, 10 Mac OS X 10.6, 10.7, 10.8, 10.9, 10.10, 10.11, 10.12, 10.13
Network protocols	TCP/IP (IPv4, IPv6)
Printing protocols	LPR, Raw TCP (port 9100), POP3 (e-mail printing), HTTP, FTP for downloading print files, IPP, SMB, WSD
PDL	PCL 6 emulation, Adobe® PostScript®3™
Available fonts	80 fonts for PCL, 139 fonts for Adobe PostScript 3



^{*1} Long-edge feeding. ^{*2} Only short-edge feeding can be used with A5 paper. ^{*3} At rated voltage, 23°C (73.4°F). May vary depending on operating conditions and environment. ^{*4} HDD capacity depends on procurement and sourcing status. ^{*5} Long-edge feeding of A4 sheets from 1st paper tray, using document glass, without Auto Colour Selection and Auto Colour mode, MFP in fully ready condition. May vary depending on operating conditions and environment. ^{*6} Not applicable to Software AP mode. ^{*7} Based on Sharp's A4 standard chart, using document feeder and long-edge feeding. Using factory default settings with Auto Colour Selection off. Scan speed will vary depending on the type of document and the scan settings. ^{*8} Colour/greyscale only. ^{*9} Storage capacity will vary depending on the type of document and the scan settings. ^{*10} Some features require option(s). ^{*11} Based on Sharp's standard chart with approx. 700 characters (A4 long-edge feeding) at standard resolution in Super G3 mode, 33,600 bps, JBIG compression.

Design and specifications are subject to change without prior notice. All information was correct at time of print. The ENERGY STAR logo is a certification mark and may only be used to certify specific products that have been determined to meet the ENERGY STAR programme requirements. ENERGY STAR is a US registered mark. Windows, Windows NT, Windows XP and Windows Vista are registered trademarks of Microsoft Corporation. Adobe and PostScript 3 are either registered trademarks or trademarks of Adobe Systems Incorporated in the U.S. and/or other countries. All other company names, product names and logotypes are trademarks or registered trademarks of their respective owners. ©Sharp Corporation February 2018. Ref: MX-M6070/MX-M5070/MX-M4070/MX-M3570/MX-M3070 Brochure (Job 18929). All trademarks acknowledged. E&O

Advanced
features



Enhanced
productivity



Easy
connectivity



Streamlined
efficiency



Optimised solutions

Configurations

Configuration examples

Connectivity and
capacity options

Finishing options



Specifications



Specifications

General
Copier
Wireless LAN
Network Scanner
Document Filing
Network Printer
Fax (optional MX-FX15 required)
External Dimensions

Click the specification buttons for further information

Compression method	MH/MR/MMR/JBIG
Communication protocol	Super G3/G3
Transmission time ^{**11} (seconds)	Less than 3
Modem speed (bps)	33,600 – 2,400 with automatic fallback
Transmission resolution (dpi)	203.2 x 97.8 (Std) / 406.4 x 391 (Ultra Fine)
Recording width	A3 – A5
Memory (GB)	1 (built-in)



^{**1} Long-edge feeding. ^{**2} Only short-edge feeding can be used with A5 paper. ^{**3} At rated voltage, 23°C (73.4°F). May vary depending on operating conditions and environment. ^{**4} HDD capacity depends on procurement and sourcing status. ^{**5} Long-edge feeding of A4 sheets from 1st paper tray, using document glass, without Auto Colour Selection and Auto Colour mode, MFP in fully ready condition. May vary depending on operating conditions and environment. ^{**6} Not applicable to Software AP mode. ^{**7} Based on Sharp's A4 standard chart, using document feeder and long-edge feeding. Using factory default settings with Auto Colour Selection off. Scan speed will vary depending on the type of document and the scan settings. ^{**8} Colour/greyscale only. ^{**9} Storage capacity will vary depending on the type of document and the scan settings. ^{**10} Some features require option(s). ^{**11} Based on Sharp's standard chart with approx. 700 characters (A4 long-edge feeding) at standard resolution in Super G3 mode, 33,600 bps, JBIG compression.

Design and specifications are subject to change without prior notice. All information was correct at time of print. The ENERGY STAR logo is a certification mark and may only be used to certify specific products that have been determined to meet the ENERGY STAR programme requirements. ENERGY STAR is a US registered mark. Windows, Windows NT, Windows XP and Windows Vista are registered trademarks of Microsoft Corporation. Adobe and PostScript 3 are either registered trademarks or trademarks of Adobe Systems Incorporated in the U.S. and/or other countries. All other company names, product names and logotypes are trademarks or registered trademarks of their respective owners. ©Sharp Corporation February 2018. Ref: MX-M6070/MX-M5070/MX-M4070/MX-M3570/MX-M3070 Brochure (Job 18929). All trademarks acknowledged. E&O

Advanced
features



Enhanced
productivity



Easy
connectivity



Streamlined
efficiency



Optimised solutions

Configurations

Configuration examples

Connectivity and
capacity options

Finishing options



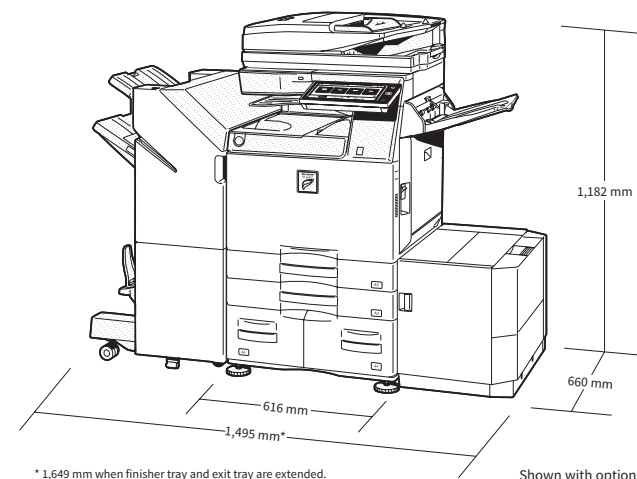
Specifications



Specifications

General
Copier
Wireless LAN
Network Scanner
Document Filing
Network Printer
Fax (optional MX-FX15 required)
External Dimensions

Click the specification buttons for further information



^{*1} Long-edge feeding. ^{**} Only short-edge feeding can be used with A5 paper. ^{**1} At rated voltage, 23°C (73.4°F). May vary depending on operating conditions and environment. ^{**2} HDD capacity depends on procurement and sourcing status. ^{**3} Long-edge feeding of A4 sheets from 1st paper tray, using document glass, without Auto Colour Selection and Auto Colour mode, MFP in fully ready condition. May vary depending on operating conditions and environment. ^{**4} Not applicable to Software AP mode. ^{**5} Based on Sharp's A4 standard chart, using document feeder and long-edge feeding. Using factory default settings with Auto Colour Selection off. Scan speed will vary depending on the type of document and the scan settings. ^{**6} Colour/greyscale only. ^{**7} Storage capacity will vary depending on the type of document and the scan settings. ^{**8} Some features require option(s). ^{**9} Based on Sharp's standard chart with approx. 700 characters (A4 long-edge feeding) at standard resolution in Super G3 mode, 33,600 bps, JBIG compression.

Design and specifications are subject to change without prior notice. All information was correct at time of print. The ENERGY STAR logo is a certification mark and may only be used to certify specific products that have been determined to meet the ENERGY STAR programme requirements. ENERGY STAR is a US registered mark. Windows, Windows NT, Windows XP and Windows Vista are registered trademarks of Microsoft Corporation. Adobe and PostScript 3 are either registered trademarks or trademarks of Adobe Systems Incorporated in the U.S. and/or other countries. All other company names, product names and logotypes are trademarks or registered trademarks of their respective owners. ©Sharp Corporation February 2018. Ref: MX-M6070/MX-M5070/MX-M4070/MX-M3570/MX-M3070 Brochure (Job 18929). All trademarks acknowledged. E&O