

LCD MONITOR



PN-HE651

PN-HE751

PN-HC651

PN-HC751

MODEL **PN-HC861**

Dismantle Instruction

Table of contents

1. Scope	3
2. Tools for dismantling.....	3
3. Dismantle Procedure	3
4. Batteries	4
5. Back covers.....	5
6. PWB and other electronic components.....	6
(1) MAIN PWB	6
(2) POWER PWB.....	6
(3) T-CON PWB.....	7
(4) IR/LED PWB	8
(5) KEY PWB.....	8
(6) Speaker	8
7 LCD Module bezels/angles	9
8 Capacitors.....	10
9 Parts List	11

1. Scope

This document describes dismantling instruction according to Annex VII of Directive 2012/19/EU.

2. Tools for dismantling

- Screw Driver
- Nipper

3. Dismantle Procedure

This product can be dismantled by below steps.

1. Remove Back covers (section 5)
2. Remove Printed circuit boards (section 6)
3. Dismantle LCD (section 7)
4. Remove Electrolyte Capacitors (section 8)

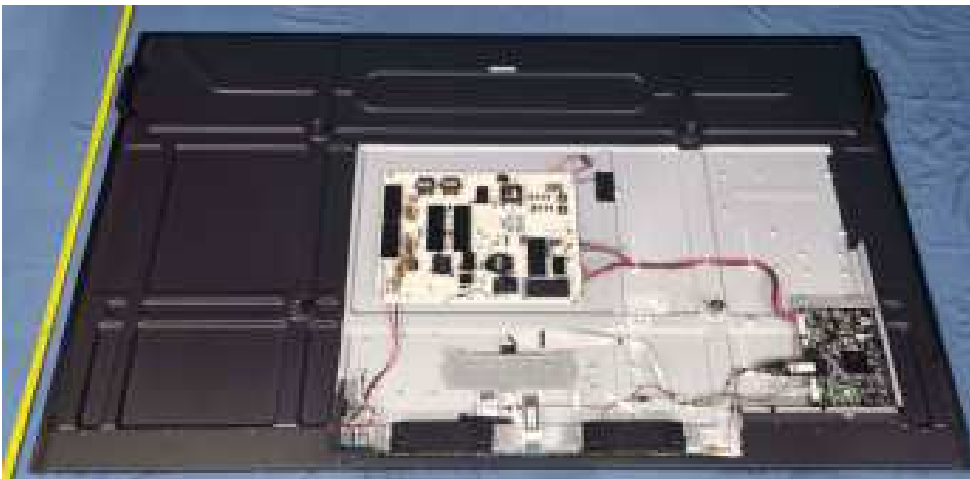
4. Batteries

This model uses only AAA battery for remote control.
Battery can easily be removed.



5. Back covers

back cover can be removed by screw driver.



6. PWB and other electronic components

All electronic components can be removed by screw driver.

(1) MAIN PWB

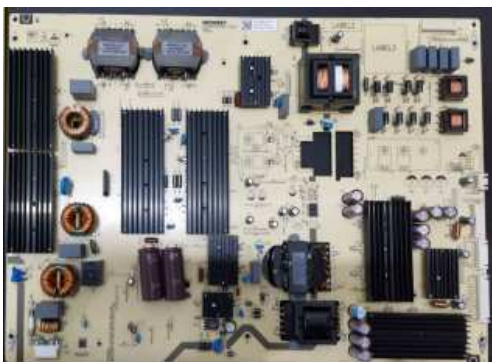


(2) POWER PWB

PN-HE651/PN-HC651



PN-HE751/PN-HC751



PN-HC861



(3) T-CON PWB

PN-HE651/PN-HC651



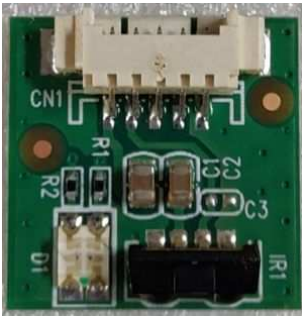
PN-HE751/PN-HC751



PN-HC861



(4) IR/LED PWB



(5) KEY PWB

PN-HE651/PN-HC651



PN-HE751/PN-HC751/PN-HC861

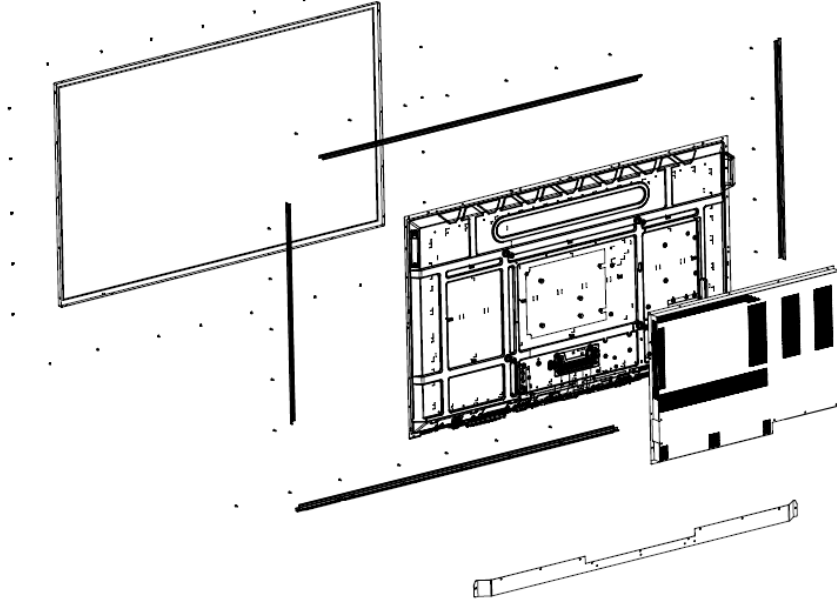


(6) Speaker

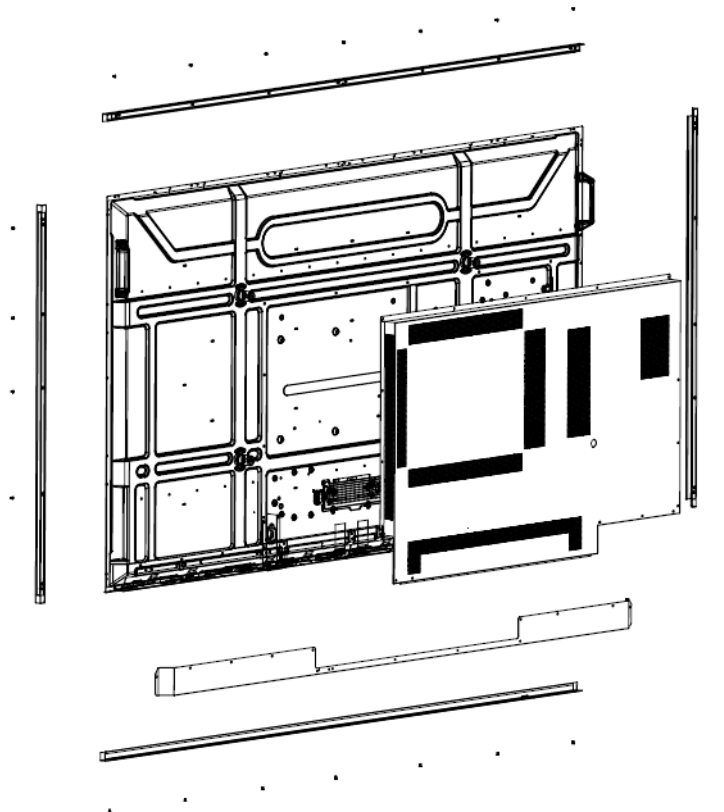


7 LCD Module bezels/angles

PN-HC651,PN-HE651



PN-HC751, PN-HC861, PN-HE751



8 Capacitors

Capacitors which diameter is larger than 25mm is installed on the Power PWB.

And these capacitors can be removed by using nipper to cut the leads.



9 Parts List

The spare parts listed in the column "Spare Parts" below are kept available in accordance to legal requirements of EU Regulation 2019/2021 for professional repairer.

Spare Part	Part Name/ Element of Part
a. Internal power board	Power PWB
b. Connectors to connect external equipment	Main PWB
c. Batteries and Accumulators	Battery(AAA) of remote control
d. DVD/Blue-Ray module	not applicable
e. HD/SSD module	not applicable