

## LCD MONITOR



**PN-M552**  
**PN-M652**  
**PN-P556**  
**PN-P656**

**MODEL**

---

## Dismantle Instruction

---

## Table of contents

---

1. Scope.....	3
2. Tools for dismantling.....	3
3. Dismantle Procedure .....	3
4. Batteries .....	4
5. Back covers .....	5
(1) PN-M552/PN-P556 .....	5
(2) PN-M652/PN-P656 .....	6
6. PWB and other electronic components.....	7
(1) MAIN PWB .....	7
(2) POWER PWB .....	7
(3) T-CON PWB .....	8
(4) KEY PWB.....	8
(5) IR PWB .....	8
(6) SPEAKER .....	9
(7) FAN .....	9
7. Parts List .....	9

## 1. Scope

This document describes dismantling instruction according to Annex VII of Directive 2012/19/EU.

## 2. Tools for dismantling

- Screw Driver
- Nipper

## 3. Dismantle Procedure

This product can be dismantled by below steps.

1. Remove Back covers (section 5)
2. Remove Printed circuit boards (section 7)

## 4. Batteries

This model uses only AAA battery for remote control.

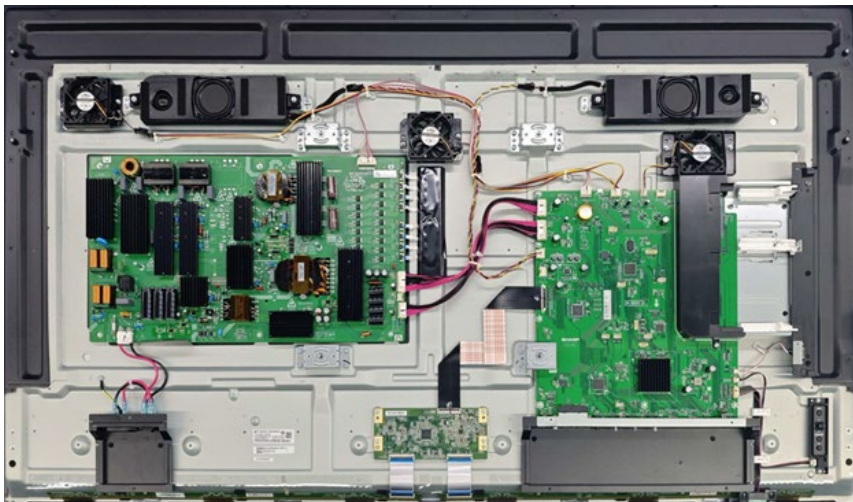
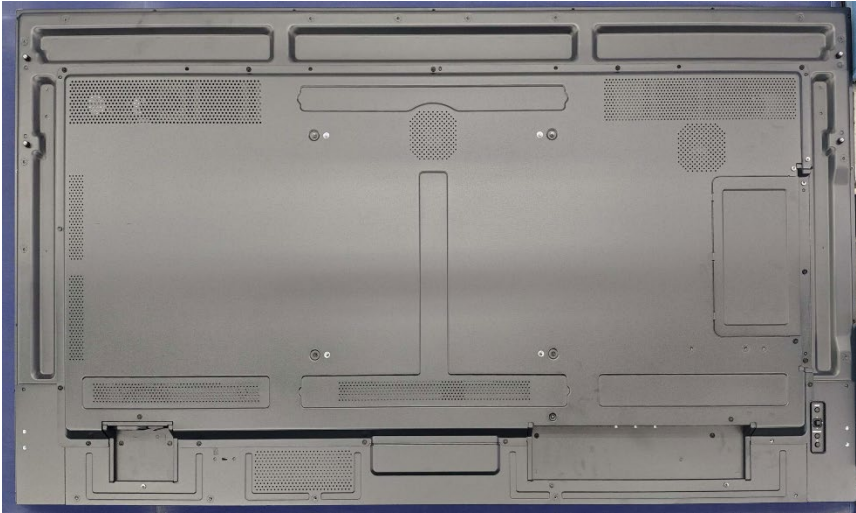
Battery can easily be removed.



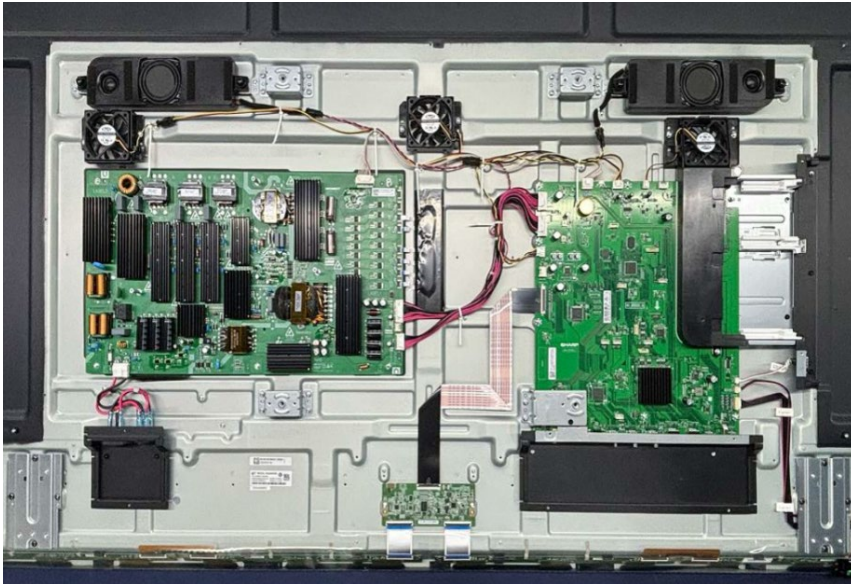
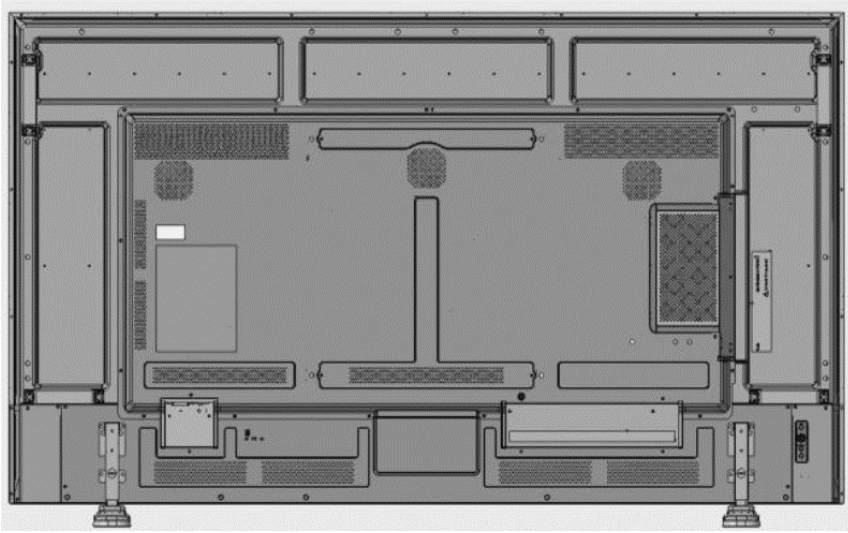
## 5. Back covers

back cover can be removed by screw driver.

(1) PN-M552/PN-P556



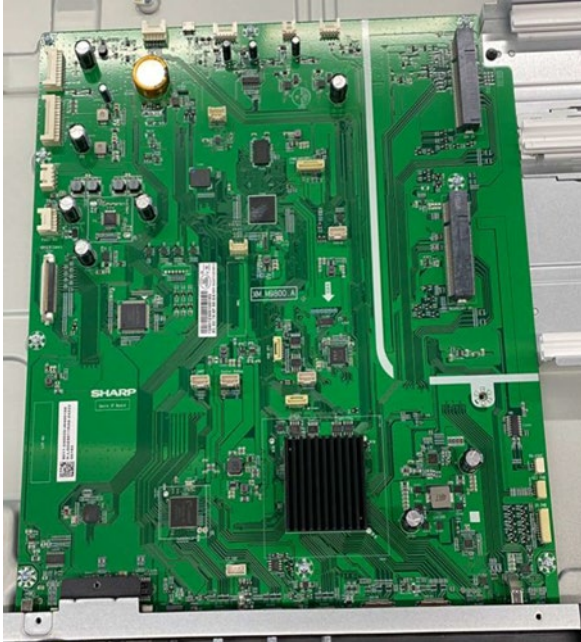
(2) PN-M652/PN-P656



## 6. PWB and other electronic components

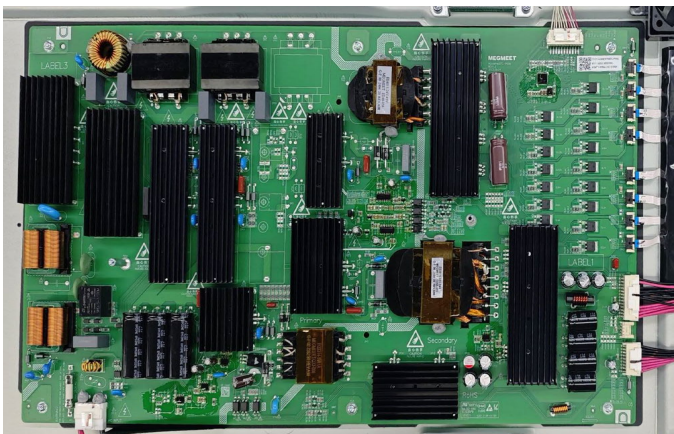
All electronic components can be removed by screw driver.

### (1) MAIN PWB

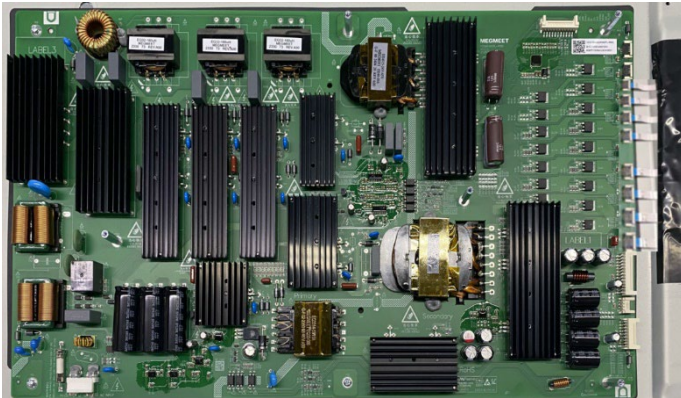


### (2) POWER PWB

- PN-M552/PN-P556



- PN-M652/PN-P656



### (3) T-CON PWB

- PN-M552/PN-P556



- PN-M652/PN-P656



### (4) KEY PWB



### (5) IR PWB



## (6) SPEAKER



## (7) FAN

- FAN1



- FAN2



## 7. Parts List

The spare parts listed in the column "Spare Parts" below are kept available in accordance to legal requirements of EU Regulation 2019/2021 for professional repairer.

Spare Part	Part Name/ Element of Part
a. Internal power board	Power PWB
b. Connectors to connect external equipment	Main PWB
c. Batteries and Accumulators	not applicable
d. DVD/Blue-Ray module	not applicable
e. HD/SSD module	not applicable